

Beneficial Insects

NoLo Bait (Nosema locustae)

The spores must be applied against the small grasshoppers (by 3rd to 4th instar) near the hatching areas for maximum efficacy. Hoppers stop feeding, become lethargic and die after feeding on Nosema-laced wheat bran bait.



215011	NoLo Bait (Nosema locustae), 1 lb.	\$14.90
215031	NoLo Bait (Nosema locustae), 5 lbs.	\$39.00
215051	NoLo Bait (Nosema locustae), 10 lbs.	\$54.00
215081	NoLo Bait (Nosema locustae), 25 lbs.	\$84.50

Milky Spore Powder (Bacillus popillae)

Once established in your lawn, Milky Spore kills the Japanese Beetle grubs for 10 to 20 years. Each grub that dies from Milky Spore releases three billion new spore. Spores are almost invulnerable to climatic conditions.



405601	Milky Spore -Bacillus Popillae, 10 oz. (2500)	\$26.90
405611	Milky Spore -Bacillus Popillae, 10 oz., 12/cs	\$249.00
405621	Milky Spore -Bacillus Popillae, 40 oz. (1/4)	\$79.95
405631	Milky Spore -Bacillus Popillae, 40 oz., 4/cs	\$299.90
405641	Milky Spore -Bacillus Popillae, 40 oz., 4/cs, 3+	\$290.00
405651	Milky Spore -Bacillus Popillae, 50lbs. - 1 Drum	\$1200.00
405661	Milky Spore Dispenser Tube	\$7.00
405671	Milky Spore Dispenser Tubes, 12/cs	\$79.00

Not Registered for Sale in the State of CA

Beneficial Generalists

Ladybird beetles (Hippodamia convergens)

These voracious predators feed on aphids, adelgids, chinch bugs, asparagus beetle larvae, thrips, alfalfa weevils, bean thrips, grape root worms, Colorado Potato Beetle larvae, whitefly, and mites. Shipped in the adult stage.



112515	Lady Beetle, Mini Mesh Bag - (approx 1,500)	\$9.95
112531	Lady Beetle, SM - 1/2 pt (approx 4,500)	\$18.40
112541	Lady Beetle, MD - 1 pt (approx 9,000)	\$26.50
112551	Lady Beetle, LG - 1 qt (approx 18,000)	\$38.00
112561	Lady Beetle, XL - 1/2 gal (approx. 36,000)	\$66.50
112572	Lady Beetle, Farm Size - 1 gal. (approx 70,000)	\$105.00

Must Ship UPS 2nd Day or Overnight

Green Lacewing (Chrysoperla sp.)

Lacewing larvae consume aphids, mealybugs, spider mites, leafhopper nymphs, caterpillar eggs, scales, thrips, and whiteflies. Green lacewing are shipped as eggs packed in bran, as pre-fed larvae, or as adults.



110011	1,000 Green Lacewing eggs - Chrysoperla sp.	\$7.75
110022	2,000 Green Lacewing eggs	\$14.20
110031	5,000 Green Lacewing eggs - Chrysoperla sp.	\$33.90
110041	10,000 Green Lacewing eggs - Chrysoperla sp.	\$58.90
110051	50,000 Green Lacewing eggs - Chrysoperla sp.	\$190.00
110081	100 Pre-Fed Adult Green Lacewing	\$55.35
110091	500 Pre-Fed Adult Green Lacewing	\$199.90

Must Ship UPS 2nd Day or Overnight

Praying Mantids (Tenodera aridifolia sinensis)

Small soft-bodied insects, gnats, mites, and insect eggs are the preferred diet of early stages of these fascinating predators. Praying mantids are shipped as egg cases, which typically produce 100-200 baby mantids.



121031	3 Praying Mantid Egg Cases - Tenodera	\$7.95
121041	Praying Mantid Egg Cases (4-10)	\$2.45
121061	Praying Mantid Egg Cases (11+)	\$2.30
121071	Praying Mantid Egg Cases (50+)	\$2.00
121081	Praying Mantid Egg Cases (100+)	\$1.80
121091	Praying Mantid Egg Cases (200+)	\$1.60

MUST Ship U.S. Priority Mail, UPS 2nd Day or Overnight

Minute Pirate Bug (Orius sp.)

Prey includes insect eggs, small corn borers, leafhopper nymphs, thrips, mites, aphids, and small caterpillars. Orius are shipped as adults and can be released by opening the container or placing them on individual plants.



116801	500 Minute Pirate Bug - Orius sp. (bottle)	\$86.50
116811	1,000 Minute Pirate Bug - Orius sp.	\$150.00
116821	2,000 Minute Pirate Bug - Orius sp.	\$288.00

Must Ship UPS Overnight

Spined Soldier Bug (Podisus maculiventris)

Both nymphs and adults feed on Mexican Bean Beetles, Colorado Potato Beetles, hornworms, Imported Cabbage Loopers, Imported Cabbage Worms, webworms, armyworms and other garden and crop pests.



116411	Spined Soldier Bug - Podisus maculiventris,	\$110.00
116421	Spined Soldier Bug - Podisus maculiventris,	\$210.00
116431	Spined Soldier Bug - Podisus maculiventris,	\$300.00
116441	Spined Soldier Bug - Podisus maculiventris,	\$420.00

Must Ship FedEx 2nd Day or Overnight. It will ship separately.

Beneficial Specialists

Aphid Predator (Aphidoletes aphidomyza)

The larval stage of this predatory gnat-sized insect preys on all types of aphids, in both indoor and outdoor settings. Release at first sign of aphids.

100911	250 Aphidoletes aphidomyza - pupae	\$15.50
100941	1,000 Aphidoletes aphidomyza - pupae	\$36.00
100951	3,000 Aphidoletes aphidomyza - pupae	\$80.00

Must Ship UPS Overnight

Aphid Parasite (Aphidius matricariae)

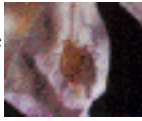
Aphidius is a small parasitic wasp that preys primarily upon the green peach aphid and as many as 40 other related species. Should be used in combination with other beneficials when aphid infestations are high.

101211	500 Aphidius matricariae - Aphid parasite	\$48.00
101221	1,000 Aphidius matricariae - Aphid parasite	\$78.00
101231	2,500 Aphidius matricariae - Aphid parasite	\$183.50
101251	5,000 Aphidius matricariae - Aphid parasite	\$342.00

Must Ship UPS 2nd Day or Overnight

Bean Beetle Parasite (Pediobius foveolatus)

Mexican bean beetle larvae. Once the adults emerge, the females deposit their eggs in the larvae of the Mexican bean beetle. Release 1 unit every 400 sq ft or 100 units per acre. 1 unit = 6 mummies = 120 to 150 wasps



- 101911 Bean Beetle Parasite - Pediobius f, 1 unit = 20 \$48.00
- 101941 Bean Beetle Parasite - Pediobius f., 2 units = \$86.00

Must Ship UPS Overnight

Leafminer Parasite (Diglyphus isaea)

The parasitic wasp lays its eggs in or next to leaf miner larvae of the second and third instar. The young parasite larvae hatch from these eggs, and will then feed on the body fluids of the larvae. 500-1,000/acre, 2-3 releases

- 112921 250 Leafminer parasite- Diglyphus isaea \$119.50
- 112951 500 Leafminer parasite- Diglyphus isaea \$250.00

Must Ship UPS 2nd Day or Overnight

Mealybug Destroyer (Cryptolaemus montrouzieri)

Both the larval and adult stages of this predator attack all stages of mealybugs. If food is scarce they will eat soft scales and aphids. Cryptolaemus are shipped as adults and are most effective in high infestations.



- 114711 25 Mealybug Destroyer (Cryptolaemus) \$24.50
- 114720 50 Mealybug Destroyer (Cryptolaemus) \$34.50
- 114721 100 Mealybug Destroyer (Cryptolaemus) \$44.50
- 114731 250 Mealybug Destroyer (Cryptolaemus) \$89.90
- 114742 500 Mealybug Destroyer (Cryptolaemus) \$159.00
- 114751 1,000 Mealybug Destroyer (Cryptolaemus m.) \$225.00
- 114771 5,000 Mealybug Destroyer (Cryptolaemus m.) \$810.00
- 114781 10,000 Mealybug Destroyer (Cryptolaemus) \$1580.00

Must Ship UPS Overnight

Moth Egg Parasites (Trichogramma sp.)

Trichogramma are tiny wasps that prey on the eggs of more than 200 pests, including borers, webworms, loopers, leafworms, fruitworms, cutworms, bollworms, armyworms. These wasps lay their eggs in the pest eggs, killing them.



- 129711 Trichogramma minutum, 1 Card (30 sq) \$37.50
- 131121 Trichogramma pretiosum, 1 Card (30 sq.) \$33.00
- 130311 Trichogramma platneri, 1 Card, 30 sq \$37.50

Must Ship UPS 2nd Day or Overnight

Purple Scale Predator (Lindorus lophanthae)

This black beetle thrives in temperatures of 59 to 77 F and a relative humidity of 20% to 90%. The primary prey of both larvae and adults are soft scales, including black, brown, and red. They may eat mealybugs and smaller insects.

- 121511 50 Purple Scale Predator - Lindorus \$48.00
- 121521 100 Purple Scale Predator - Lindorus \$89.00

Must Ship FedEx Overnight

Red Scale Parasite (Aphytis melinus)

California red scale is the favorite prey of Aphytis melinus, although it will prey on citrus red scale, oleander scale, San Jose scale, ivy scale, and citrus yellow scale. Aphytis ship as adults, the adult females lay their eggs in scale.



- 121911 5,000 Red Scale Parasite- Aphytis melinus \$33.00
- 121951 10,000 Red Scale Parasite- Aphytis melinus \$39.00
- 121981 30,000 Red Scale Parasite- Aphytis melinus \$90.00

Must Ship UPS Overnight

Whitefly Control

Encarsia formosa

These tiny parasitic wasps provide excellent control of greenhouse whitefly (Trialeurodes vaporariorum) and limited control of sweet potato whitefly (Bemisia tabaci). Each adult Encarsia lays 100 to 200 eggs.



- 132111 1,000 Encarsia formosa \$19.00
- 132131 2,000 Encarsia formosa (2 strips) \$29.50
- 132141 5,000 Encarsia formosa (5 strips) \$66.25
- 132172 10,000 Encarsia formosa (10 strips) \$102.00

Must Ship UPS 2nd Day or Overnight

Delphastus catalinae

This predatory beetle is very effective against greenhouse and sweet potato whitefly. Both the larval and adult beetles feed on all stages of whitefly and will eat spider mites when whitefly are not available.



- 126011 100 Whitefly Predator - Delphastus catalinae \$38.95

Must Ship UPS Overnight

Eretmocerus nr. californicus

These tiny parasitic wasps control sweet potato whitefly and silverleaf whitefly in greenhouse and outdoor crops. Eretmocerus are shipped as eggs packed in bran. Sprinkle the mixture into leaf axils or around the base of plants.



- 100231 3,000 Eretmocerus californicus- whitefly \$79.00
- 100261 9,000 Eretmocerus californicus - whitefly \$215.00
- 100291 15,000 Eretmocerus californicus - whitefly \$315.00

Must Ship UPS Overnight

Thrips Predator

Amblyseius cucumeris

This thrips predator feeds on the young stages of thrips only, as the adults are too large for them to kill. Release cucumeris when thrips populations are low and allow several weeks for the predators to be effective.



- 152111 5,000 Amblyseius cucumeris \$14.50
- 152131 10,000 Amblyseius cucumeris \$24.25
- 152141 25,000 Amblyseius cucumeris \$42.00
- 152151 50,000 Amblyseius cucumeris \$49.50
- 152161 100,000 Amblyseius cucumeris, 2 ltr \$74.00
- 152171 300,000 Amblyseius cucumeris, 6 ltr tub \$200.00

Must Ship UPS 2nd Day or Overnight

Fungus Gnat Predator

Hypoaspis sp

This tiny brown mite naturally inhabits the top layer of soil where fungus gnats, springtails and thrips pupae dwell. The female predatory mites lay their eggs in the soil and the nymphs and adults feed on the soil-dwelling pests.



154011	Hypoaspis sp.- Fungus Gnat Pred, 1/2 ltr.	\$29.50
154021	Hypoaspis sp.- Fungus Gnat Pred, 1 ltr.	\$42.00
154031	Hypoaspis sp.- Fungus Gnat Pred, 2 ltr.	\$72.00
154041	Hypoaspis sp.- Fungus Gnat Pred, 3 ltr.	\$86.00
154061	Hypoaspis sp.- Fungus Gnat Pred, 6 ltr.	\$150.00

Must Ship UPS 2nd Day or Overnight

Spider Mite Control

Galendromus occidentalis

This mite predator is very versatile and tolerates high temperatures and high humidity, both indoors and out. Control spider mites, spotted mites, Russet mites, and other mites in gardens, greenhouses, and orchards of all types.

155211	1,000 Galendromus occidentalis	\$30.00
155281	5,000 Galendromus occidentalis	\$150.00

Must Ship FedEx 2nd Day or FedEx Overnight

Neoseiulus californicus

Although these predatory mites consume their prey at a more leisurely pace than Mesoseiulus longipes and Phytoseiulus persimilis (one adult or a few eggs per day) they can survive longer under starvation conditions.



151211	1,000 Neoseiulus californicus	\$30.00
151231	1,000 Neoseiulus californicus, 25+ u	\$25.00
151351	N. californicus/P. persimilis mix , 5000 (large	\$125.00

Must Ship FedEx 2nd Day or FedEx Overnight

Neoseiulus fallacis

This predaceous mite has a strong preference for pest mite species and will travel from tree to tree searching for them. Does best in warm humid conditions, but will also tolerate low humidity.



151511	1,000 Neoseiulus fallacis	\$30.00
151522	5,000 Neoseiulus fallacis	\$111.00

Must Ship FedEx 2nd Day or FedEx Overnight

Phytoseiulus persimilis

Two-spotted spider mites and others are the target food of P. persimilis, which consume 5 to 10 pest adults or up to 20 pest eggs per day. P. persimilis need a relative humidity greater than 60% to survive, especially in the egg stage.



157111	1,000 Phytoseiulus persimilis	\$30.00
157151	5,000 Phytoseiulus persimilis	\$85.00
157161	25,000 Phytoseiulus persimilis	\$400.00
151351	N. californicus/P. persimilis mix , 5000 (large	\$125.00

Must Ship FedEx 2nd Day or FedEx Overnight

Mesoseiulus longipes

These predators are similar to P. persimilis but can tolerate lower humidity (40% at 70 degrees F). Longipes are effective in temperatures up to 100 degrees F, although a comparable increase in humidity is required.

156111	1,000 Mesoseiulus longipes	\$36.00
156121	1,000 Mesoseiulus longipes, (2-4 u)	\$30.00
156131	1,000 Mesoseiulus longipes, (5-11 u)	\$28.50
156141	1,000 Mesoseiulus longipes, (12-25 u)	\$26.00
156151	1,000 Mesoseiulus longipes, (26-99 u)	\$24.00
156161	1,000 Mesoseiulus longipes, (100+ u)	\$22.00

Must Ship FedEx 2nd Day or FedEx Overnight

Beneficial Nematodes

Beneficial Nematodes - Steinernema feltiae

Microscopic, nonsegmented worms that occur naturally in soil all around the world. Steinernema sp preys on ants, weevils, armyworms, cutworms, webworms, maggots, fleas, ticks, gnats, to name a few.



221221	Nematodes - Steinernema feltiae, 10 mil	\$24.90
221231	Nematodes - Steinernema feltiae, 50 mil	\$54.00
221240	Nematodes - Steinernema feltiae, 100 mil, 2	\$105.00
221250	Nematodes - Steinernema feltiae., 200 mil, 4	\$190.00
221260	Nematodes - Steinernema feltiae, 600 mil, 12	\$525.00
221271	Nematodes - Steinernema feltiae, 10000 mil,	\$870.00

Must Ship UPS 2nd Day or Overnight

Beneficial Nematodes - Heterohabditis

This nematode species is similar to Steinernema sp. except that it enters its prey directly through the body wall as well as through body openings.



221321	Nematodes - Heterohabditus b., 10 mil	\$25.90
221331	Nematodes - Heterohabditus b., 50 mil	\$56.00
221341	Nematodes - Heterohabditus b., 100 mil, 2 pts	\$105.00
221351	Nematodes - Heterohabditus b, 200 mil, 4 pts	\$199.00

Must Ship UPS 2nd Day or Overnight

Beneficial Nematodes - carpocapsae

The most studied, available, and versatile of all entomopathogenic nematodes. Particularly effective against lepidopterous larvae, including various webworms, cutworms, armyworms, girdlers, and wood-borers.



221226	Nematodes - Steinernema carpocapsae., 10	\$25.90
221234	Nematodes - Steinernema carpocapsae, 50 mil	\$56.00
221241	Nematodes - Steinernema carpocapsae, 100	\$105.00
221251	Nematodes - Steinernema carpocapsae, 200	\$199.00
221261	Nematodes - Steinernema carpocapsae, 600	\$535.00

Must Ship UPS 2nd Day or Overnight

Bacillus Thuringiensis

Mosquito Dunks & Bits (Bt israeliensis)

Highly effective against mosquito and black fly larvae. Can be used wherever mosquitoes breed. Does not harm people, pets, fish, or plants. Use 1 dunk/100 sq. ft. of infested water. Disperse Bits at 2.5-20 lbs per acre



211111	Mosquito Dunks 6/pk (Bti)	\$12.95
211121	Mosquito Dunks, 12 x 6/pk (72 Dunks)	\$133.95
211131	Mosquito Dunks 20/pk (Bti)	\$24.95
211141	Mosquito Dunks 5 x 20/pk (Bti), 1 cs	\$108.00
211151	Mosquito Dunks 5 x 20/pk (Bti), 2 cs.+	\$103.95
211211	Mosquito ComboPak: 2 Dunks + 8 oz. granular	\$14.95
211311	Mosquito Bits (Bti), 8 oz. granular	\$8.95
211331	Mosquito Bits (Bti), 30 oz. granular	\$12.95
211371	Mosquito Bits (Bti), 20 lbs. granular	\$99.90

Aquabac Granules & Aquabac xt (Bt israeliensis)

Granular Bti should be broadcast at 2.5-20 lbs/acre, every 7-14 days. Apply Aquabac xt Aqueous Suspension at a rate of 0.25 - 2 pints per acre, depending on the organic properties of the water.



210911	Aquabac 200G 5/8 (Bti). 40 lbs. granular	\$149.90
210941	Aquabac 200G 5/8 (Bti), 40 lbs. granular, 2+	\$137.90
210961	Aquabac 200G 5/8 (Bti), 40 lbs. granular, 6+	\$122.20
210971	Aquabac 200G 5/8 (Bti), 40 lbs. granular, 40+	\$103.25
211011	Aquabac xt Aqueous Suspension, 2.5 gal	\$132.00
211021	Aquabac xt Aqueous Suspension, 2.5 gal, 2/cs	\$247.00

Thuricide Liquid (Bt kurstaki)

Natural, biodegradable, safe control of most chewing caterpillar pests. Exhibits no toxicity toward humans, other vertebrates, or beneficial insects. Thuricide is sprayed onto plants, where it is eaten by leaf-eating caterpillars.



201211	Thuricide, (Bt var. Kurstaki), 8 oz. liq. conc.	\$10.10
201221	Thuricide, (Bt var. Kurstaki), 8 oz. liq. conc.,	\$102.90
201231	Thuricide, (Bt var. Kurstaki), 16 oz. liquid	\$16.90
201241	Thuricide, (Bt var. Kurstaki), 16 oz. liquid	\$170.90

Not Registered for Sale in the State of CA

Colorado Potato Beetle Beater

Effective against Colorado Potato Beetle and Elm Leaf Beetle, which attack potatoes, tomatoes, and eggplant. Bt San Diego is only effective against the developmental stages (first 4 instars).



201421	CO Potato Beetle Beater, 16 oz.	\$19.50
--------	---------------------------------	---------

Not Registered for Sale in the State of CA

Dipel 150 Dust

Dust intended for use against chewing larvae (caterpillars) of cabbage looper, cabbageworm, grape leaf folder, hornworm, cutworm, sod webworm and others. Treated vegetables may be consumed anytime after spraying.



201501	Dipel 150, (Bt var.kurstaki), 1 lb. dust	\$6.75
201511	Dipel 150, (Bt vark. urstaki), 1 lb. dust,	\$68.90

Not Registered for Sale in the State of CA